



# Public Works Stormwater Newsletter

Summer 2022

Walton County Board of County Commissioners

## PRACTICE CLEAN BOATING HABITS

### PROTECT OUR WATERWAYS

The quality of Florida's surface waters can be degraded by boat sewage, cleaning products, spilled fuel, and trash. These materials not only degrade Florida's environment, but also hamper the enjoyment of Florida's recreational areas. Each one of us must share the responsibility for pollution prevention.

Sometimes it is as simple as doing things a little differently. Clean boating habits strive for a cleaner environment through your efforts and those of volunteers, citizen support groups, and partnerships with government, business, and industry.

### CLEAN BOATING TIPS:

- When fueling your boat in the water, use caution in filling your fuel tank to avoid spillage.
- Keep all engines well tuned: regularly check seals, gaskets, hoses and connections for leaks.
- When possible, remove your boat from the water and perform cleaning where debris can be captured and properly disposed.
- Use freshwater to clean your boat after every use. Wash boats with a sponge and clean water.
- Stow all loose items, plastic bags, drink cans, and other articles so they don't blow overboard.
- Carry a trash bag and never discharge your garbage overboard.
- Dispose of monofilament line, hooks, and other litter at an appropriate upland facility.
- Use oil absorbent materials in your bilge and for spill cleanup.
- Use marinas with proper sewage pump out services.

Source : FDEP



### Walton County Recycles

Open to the public are:

- 15 recycling trailers;
- 4 County owned used oil collection sites;
- 2 tires and white goods collection sites.

For a map of these locations go to:

[www.co.walton.fl.us](http://www.co.walton.fl.us) > Departments > Solid Waste > Recycling Locations

### Did you know?

- Approximately 322 billion gallons of water are used in the United States per day.
- About 6800 gallons of water is required to grow a day's food for a family of four.
- To create one pint of beer it takes 20 gallons of water.
- It takes about 70 gallons of water to fill a bathtub.

### RESOURCES

Public Works:  
850-892-8108  
[www.co.walton.fl.us](http://www.co.walton.fl.us)

Code Enforcement:  
850-622-0000

Extension/IFAS:  
850-892-8172  
<http://walton.ifas.ufl.edu>

*Public Works Division  
Environmental Department*

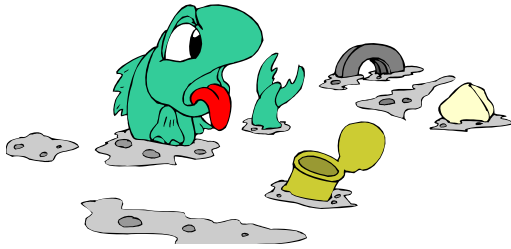
117 Montgomery Circle  
DeFuniak Springs, FL 32435

Phone: 850-892-8108  
www.co.walton.fl.us



# REMEMBER

What we do affects rivers, lakes, coastal waters, wildlife and YOUR drinking water. Once everyone realizes how they contribute to the problem and that they can be part of the solution, the threat of stormwater pollution will decline.



To protect all of us and our environment, Chapter 7 of the Walton County Land Development Code prohibits unauthorized discharges into storm drains or ditch systems. The costs for removing dumped items and cleaning spills can be very high. Please dispose of your trash and waste properly. To report illegal dumping, contact Code Enforcement at 622-0000.

**PRIDE PRESERVATION CONSERVATION**

## Enhancing the Efficiency of a Sprinkler System

Here are some tips for improving the efficiency of your sprinkler system:

- Only water after the sun has gone down or in the early morning.
- Make sure your spray and sprinkler heads are properly adjusted to avoid watering pavements and other non-landscaped areas.
- Water areas in the shade about 30 percent less than sunny areas.
- If possible, use drip irrigation to water trees and shrubs.
- To eliminate runoff, set your clock to cycle 2-4 start times (no longer than 5 minutes each), 1 to 2 hours apart to allow water to soak into the soil. For example: water three times for 5 minutes instead of 15 minutes all at once.
- Develop a separate drip watering schedule for trees, shrubs and flower beds.
- Aerate in the spring and fall to loosen soil and reduce runoff.

