

Getting Started With The Interactive Map...

1. Click or enter the following URL into your web browser. <http://fl-waltoncounty3.civicplus.com/1096/County-Maps>
2. Click the “GIS Interactive Map” link.
3. The following map should appear (refer to Figure 1).

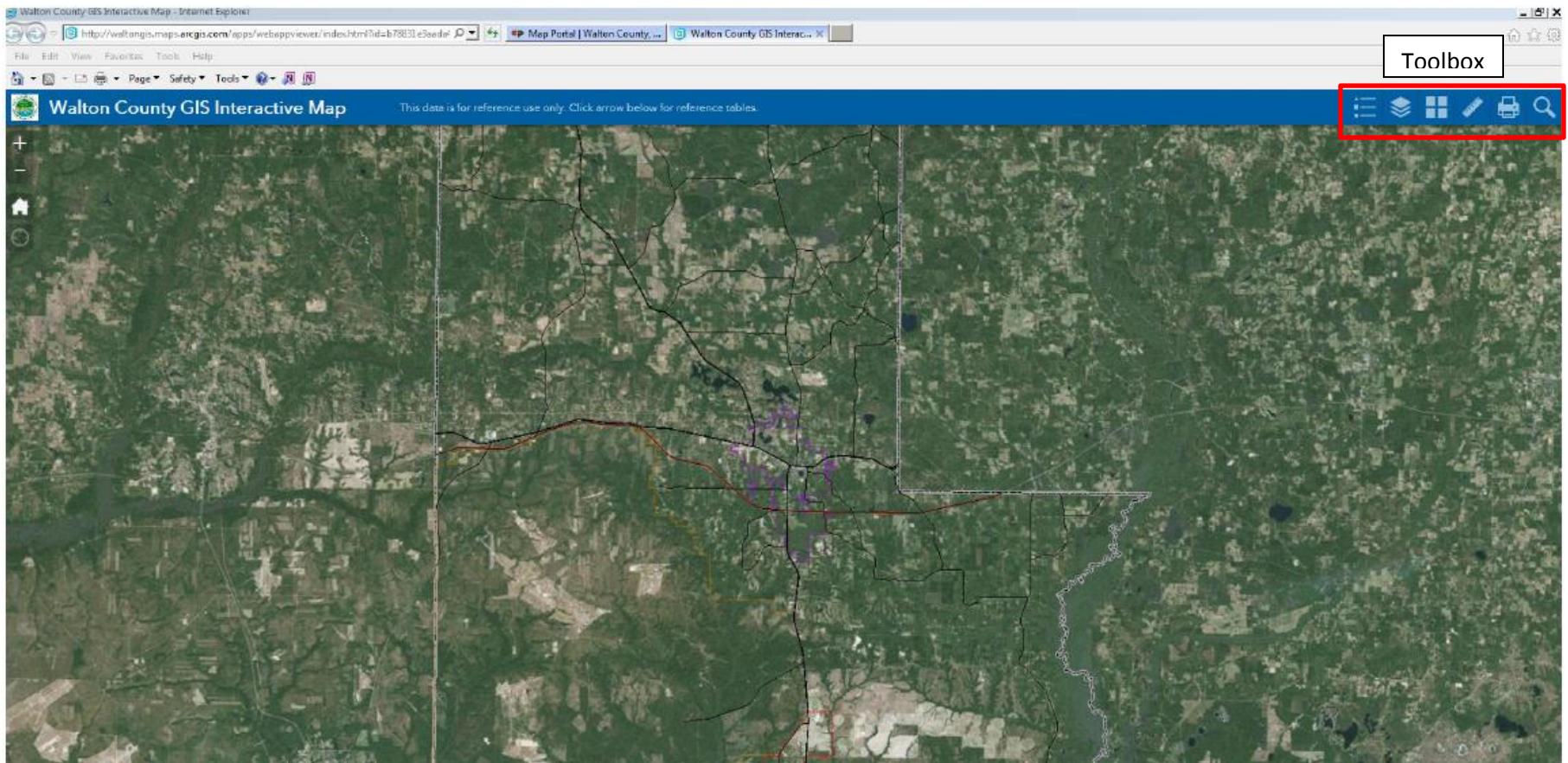


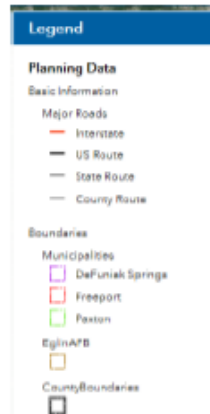
Figure 2

4. Look for the toolbar at the top right hand side (refer to Figure 1 for location). It should appear like Figure 2.



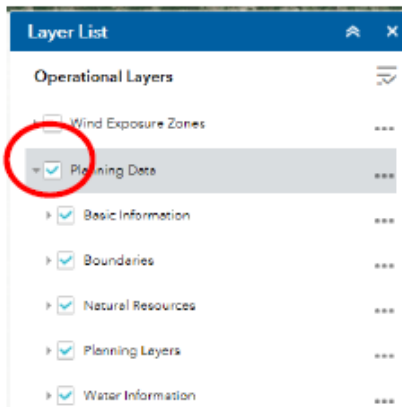
Figure 1

Click **A** to activate the Legend



****Please Note:** Some items in the legend may be difficult to differentiate because the colors may not be distinct. It is recommended to click on the actual location to view the specific information. See next page for more options.

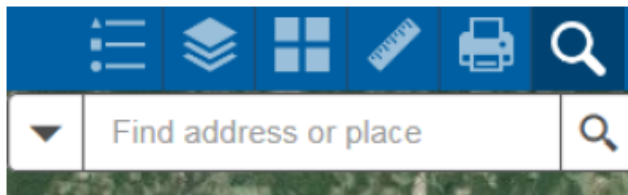
Click **B** to activate the Layer list. Click the triangles to reveal additional data. Click inside the empty box next to the layer name to turn the layer on.



Click **C** to change the base map.

Click **D** to use the measure tool.

Click **F** to locate Parcel ID Number, Address, or Street



To view the legend in the “Layer List”, click on the triangle next to the Activation Box which will reveal either additional data or the layer’s legend (refer to Figure 3). The layer will not display until the activation box has been clicked displaying a check mark (refer to Figure 4).

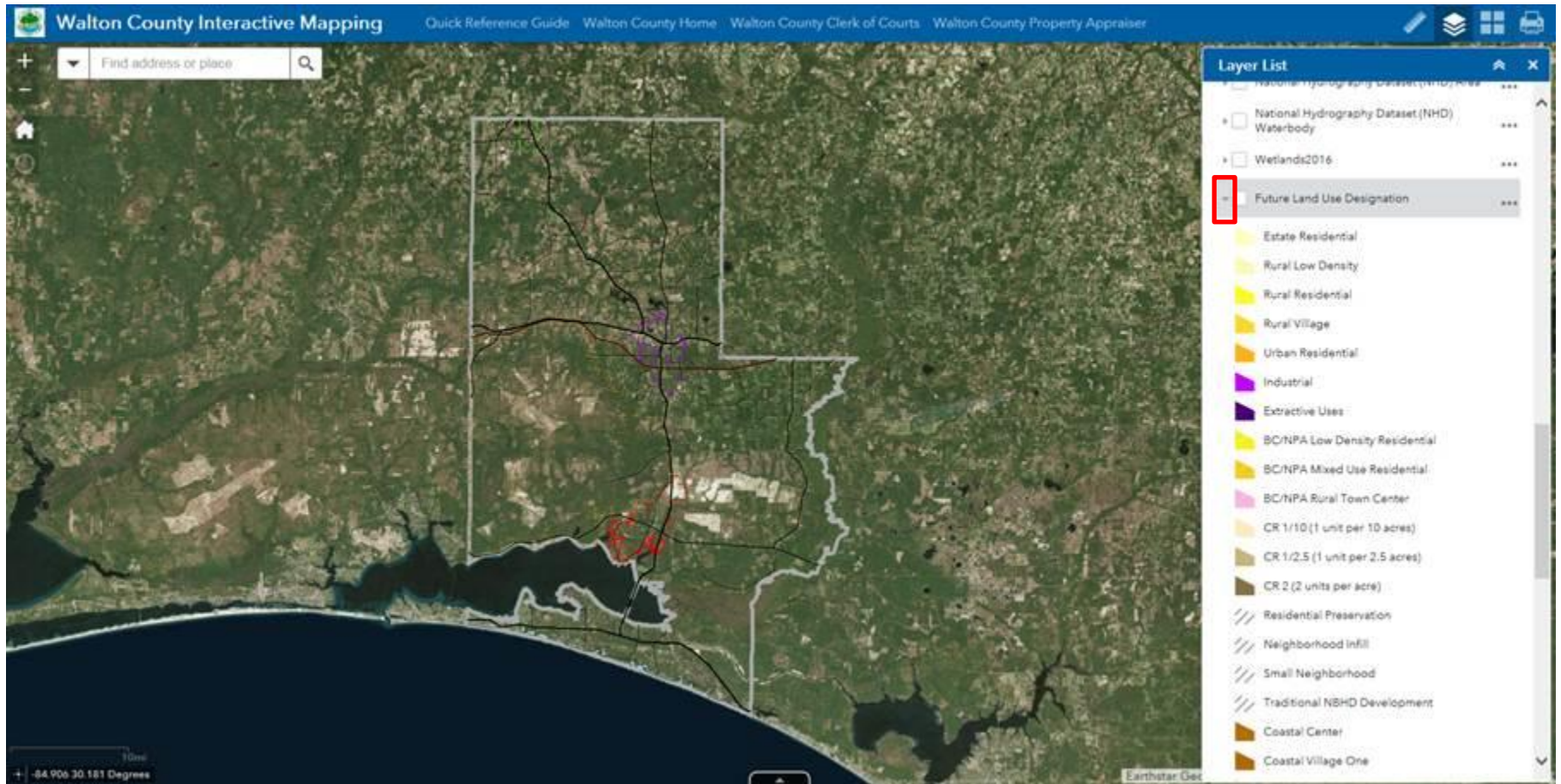


Figure 3

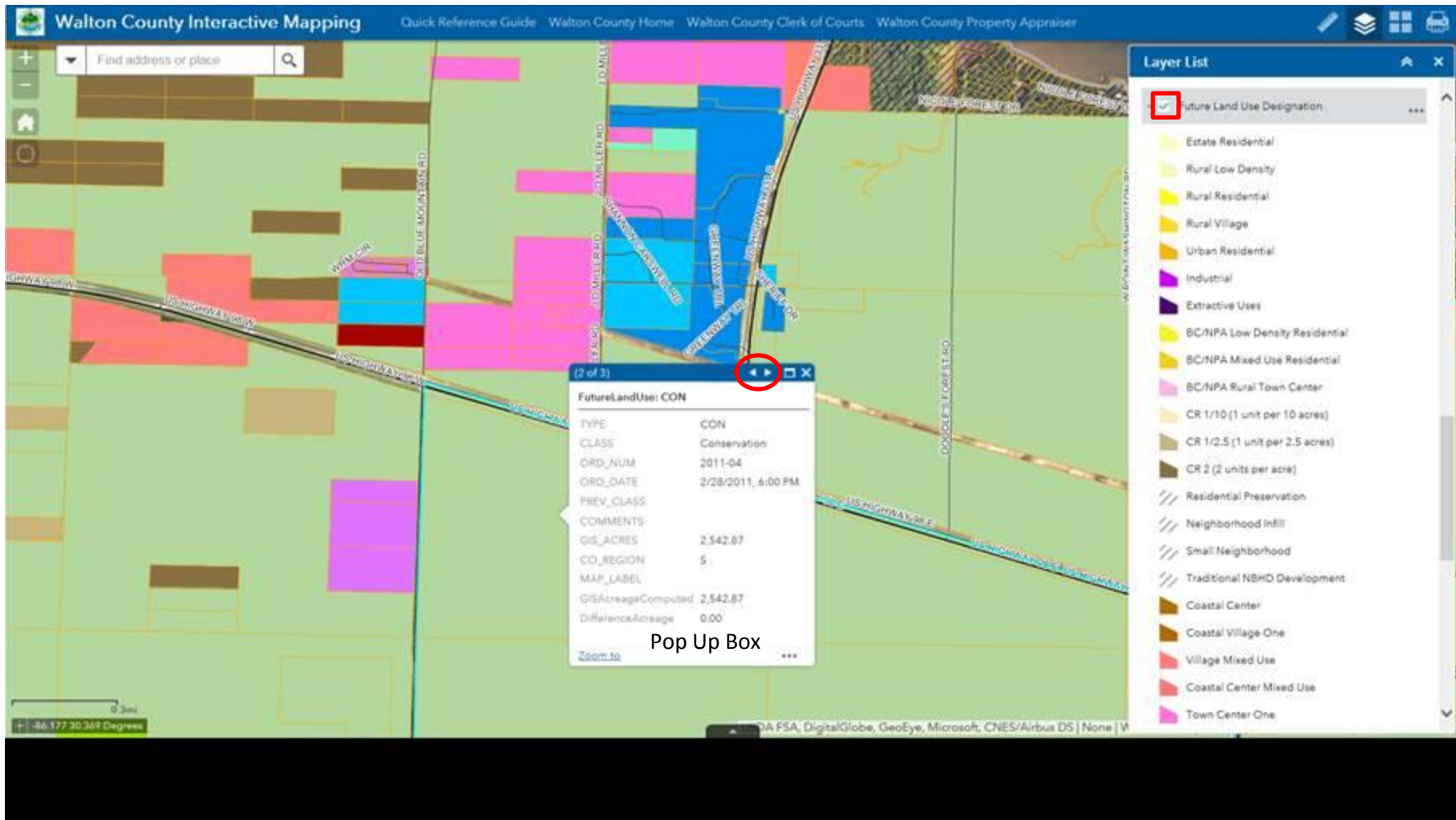


Figure 4

Click on the location to display the pop up information associated. Click the sideways triangle to view more information in the pop up box (refer to Figure 4). **Reminder:** The layer will not display until the activation box has been clicked displaying a check mark (refer to Figure 4).